

## PRODUCT DATASHEET

White lamp cup, enhanced anti-glare, Led spot light  
HYD-342AS-10W 3K/4K/6K



---

### Application

- Home
- Restaurant
- Exhibition Hall
- Stage
- Conference Room
- Clothing Store

---

### Benefits

- Flicker free
- It can be used for emphasis lighting and decorative lighting
- Spot light have prominent advantages in commercial lighting
- No secondary light spot, it can create a wall washing effect

---

### Features

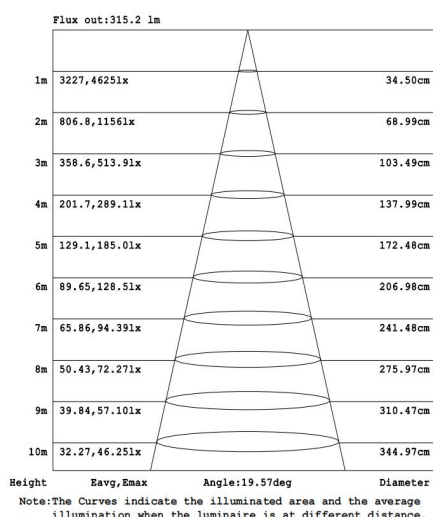
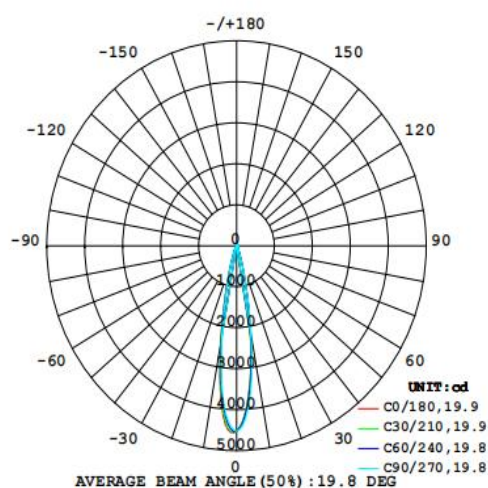
- Warranty 5 years
- PC, Good light transmission
- Small size, light weight, buckle design, easy to install
- Die-cast aluminum, good heat dissipation, reduce light decay

## Electrical Data

Nominal wattage (W)	<b>10W</b>
Nominal Voltage (V)	220-240 V
Mains Frequency (Hz)	50/60
Nominal Current (mA)	100
LED Driver Current (mA)	300
LED Driver Voltage (VDC)	24-43
LED Driver Efficiency (%)	...
Power Factor $\lambda$	0.5
Total harmonic distortion (%)	...
Operating mode	External LED driver

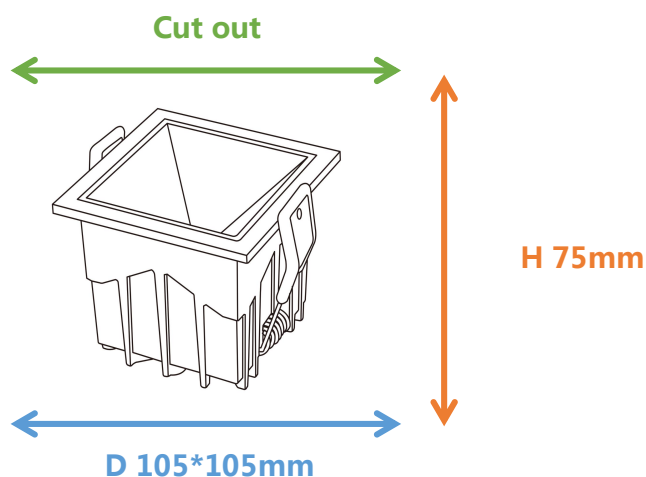
## Photometrical data

Luminous flux $\pm 10\%$ (lm)	575.1	639	710
Luminous efficacy (lm/w)	59.13	65.7	73
Color temperature	<b>3000K</b>	<b>4000K</b>	<b>6000K</b>
Light color (designation)	Warm White	Nature White	Cold White
Color rendering index Ra	$\geq 80$		
Standard deviation of color matching	$\leq 5$ SDCM		
UGR	<19		
Luminous intensity/cd	4561		
Flickering	Flicker free		
Beam angle	20 °		


**IES**

## Dimensions & Weight

Diameter (mm)	105*105
Height (mm)	75
Product weight (g)	487



## Material & Colors

Product color	White Lamp cup / White Housing
Housing color	White
Body material	Aluminum
Cover material	PC
Mercury content	0.0 mg

## Application & Mounting

Ambient temperature range	-10°C~+40 °C
Temperature range at storage	-10°C~+40 °C
Type of connection	Screwless terminal
Type of protection	IP20
Dimmable	No
Mounting type	Recessed
Mounting location	Ceiling
Application environment	Indoor
Cut size (mm)	95*95
LED module replaceable	Not replaceable
With light source	Yes

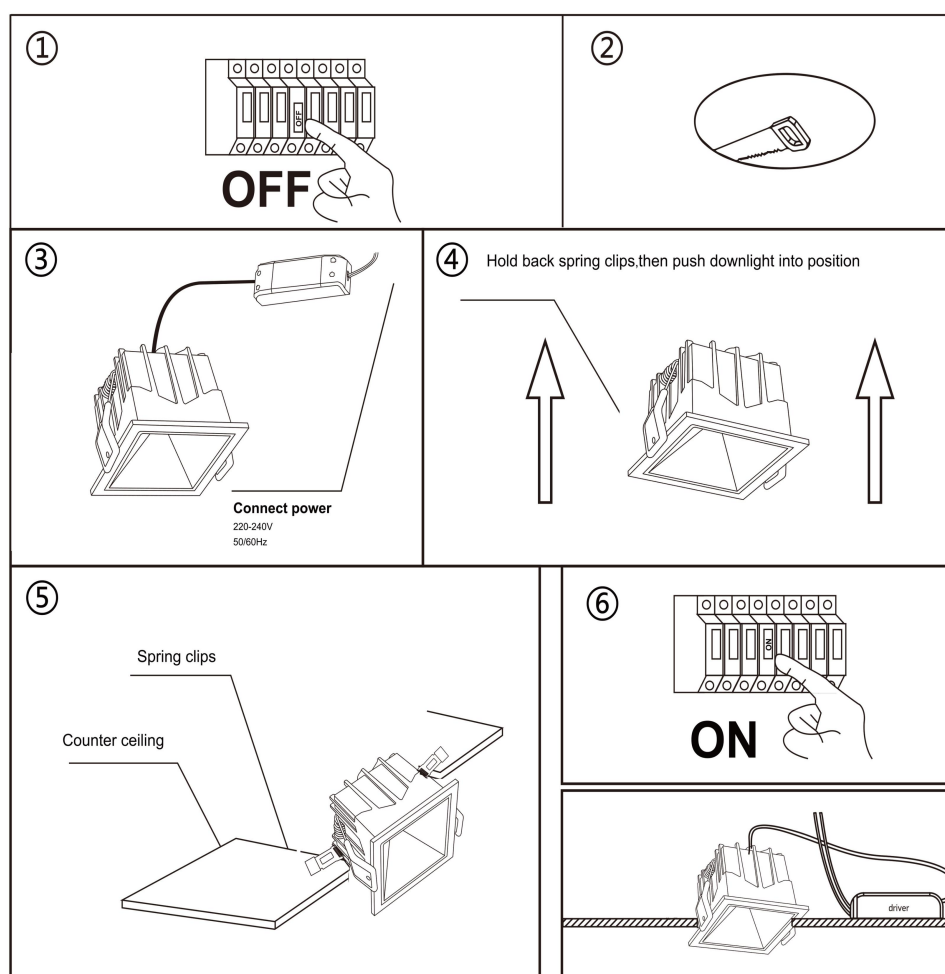
## Certificates & Lifespan

Life (h)	50,000
Certificates	CB CE LVD EMC
Standards	ISO9001:2015

## Logistical Data

Product code	Dimensions (L*W*H)	Pcs/ carton	G.W. kg	Volume CBM
HYD-342AS-10W	59.5*25*28.5cm	20	12	0.04239

## Installation Method



## Disclaimer

Subject to change without notice. Errors and omission excepted. Always make sure to use the most recent release.